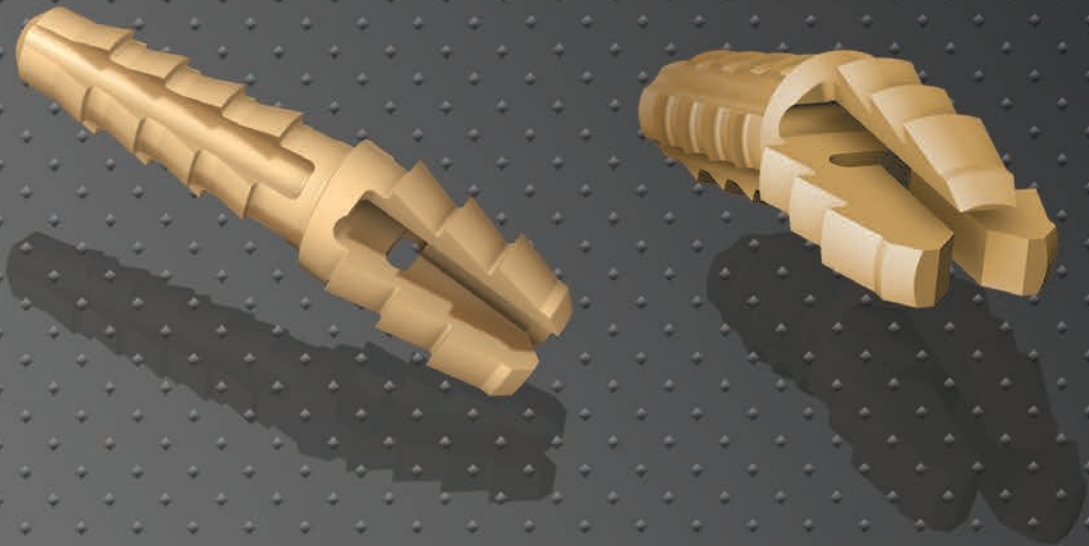




A GLOBAL EXTREMITY COMPANY

# PEEK<sup>®</sup> DUAFIT<sup>®</sup> PIP

## Proximal Interphalangeal Implant



Radio Transparent PEEK-OPTIMA<sup>®</sup>

### 3 ANGLES / 4 LENGTHS IN STERILE TUBES

- Intramedullary Design for Secure Hold During Fusion
- Features Barbed Legs for Enhanced Stabilization
- Sterile, Single-use, Recyclable Instrument Set



Distributed by:

**1300 880 155 (AU)**  
**0800 222 770 (NZ)**  
[www.lmtsurgical.com](http://www.lmtsurgical.com)





## EFFICIENT Sterile Delivery System



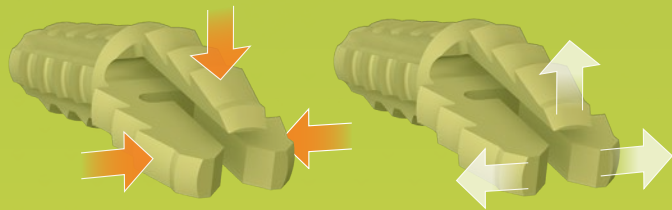
STERILE DELIVERY TUBES



Conical **BARBED DESIGN** to enhance stabilization while securely holding adjacent phalanges during fusion

The **DuaFit<sup>®</sup> System** consists of Implants and corresponding Instruments for the arthrodesis of interphalangeal joints, including deformities of the lesser toes, such as claw, hammer and mallet toe.

This intramedullary implant features a long barbed proximal phalanx aspect and three distal blades designed to enhance stabilization.



The implants are available in 3 angles, 0°, 10° and 17° with 4 sizes each to accommodate patient specific anatomy and interphalangeal angles. The 0° implants are cannulated, providing surgeons the option to temporarily pin the corrected phalanx to the metatarsal with a guide wire.

Each **DuaFit Implant** comes **INDIVIDUALLY PACKAGED** and easily identifiable by style, configuration and length on the color-coded end cap.

